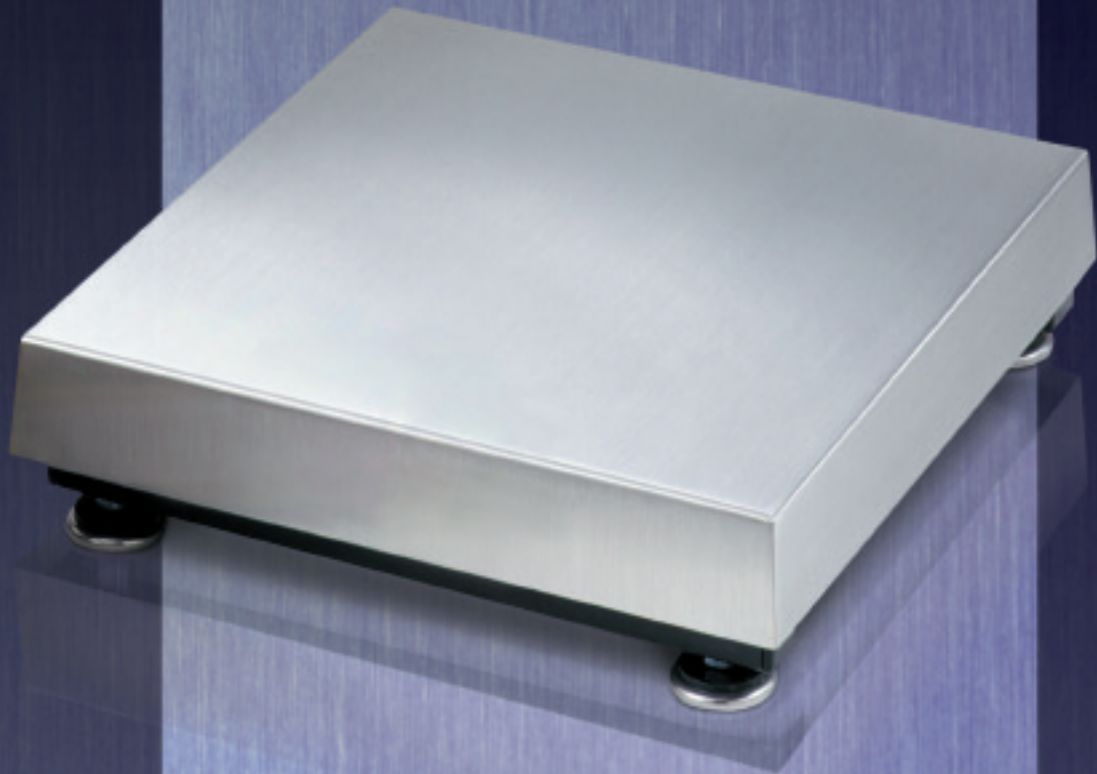


BenchMark™

BENCH SCALES



**Tough stainless steel
construction means
long-lasting performance**

From chemical and food processing to hostile washdown environments, there's a BenchMark scale to fit your needs.

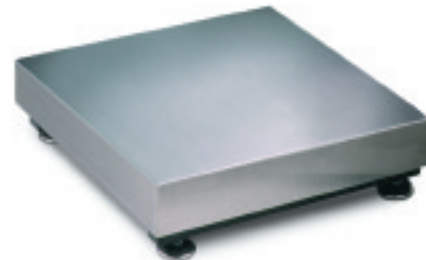
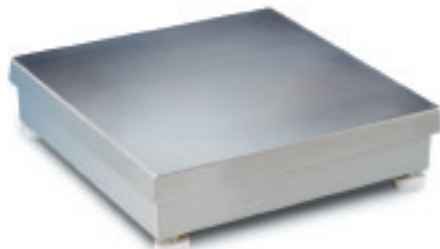
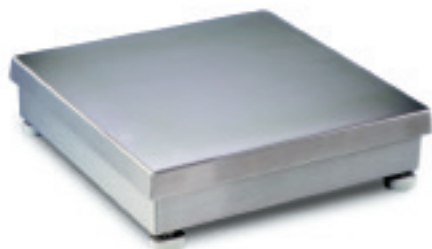
NTEP certified BenchMark scales provide true industrial solutions in demanding weighing applications.



RICE LAKE WEIGHING SYSTEMS
Industrial Solutions on a Global Scale®

BenchMark™

BENCH SCALES



BENCHMARK SL

Legal-for-Trade Light-Capacity Bench-Top Weighing

The BenchMark SL Series offers remarkable precision and a sanitary surface for bench-top weighing in food and chemical processing environments.

BenchMark SL sizes and capacities:

- 10" x 10" platform (2*, 5, 10, 20, and 30 lb capacities)
- 12" x 12" platform (30, 50, and 100 lb capacities)

BENCHMARK CW-80B

Light-Capacity Weighing with Durable Stainless Steel Load Cell

Built of industrial-quality 304 stainless steel, the BenchMark CW-80B is tough and accurate. The unique **LifeGuard™** base design provides unparalleled load cell protection by isolating the load cell from mechanical overloads and shock loads.

The CW-80B's stainless steel load cell is highly durable and corrosion resistant for hostile environments. It's ideal for food and chemical processing, rugged industrial use, and general purpose weighing.

BenchMark CW-80B sizes and capacities:

- 10" x 10" platform (6, 10, 15, and 30 lb capacities)
- 12" x 12" platform (30 and 60 lb capacities)

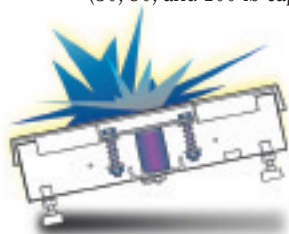
BENCHMARK

Extremely Accurate Medium- to High-Capacity Weighing

Choose mild steel or stainless steel—either way the BenchMark's heavy-duty construction provides ultimate durability, sensitivity, and long life for a variety of demanding industrial weighing environments.

BenchMark sizes and capacities:

- 12" x 12" platform (30, 50, and 100 lb capacities)
- 12" x 18" platform (50 and 100 lb capacities)
- 18" x 18" platform (50, 100, 150, 200, 250, 300, 500, and 1000 lb capacities)
- 18" x 24" platform (50, 100, 150, 200, 250, 300, 500, and 1000 lb capacities)
- 24" x 24" platform (100, 150, 200, 250, 300, 500, and 1000 lb capacities)



The BenchMark SL and CW-80B feature our exclusive **LifeGuard™** design that provides unmatched load cell protection from mechanical overloads and shock loads.

BenchMark Features/Options:

	SL	CW-80B	BM
Approvals:			
NTEP certified	*2 lb capacity not NTEP certified.	Std*	Std
Measurement Canada approved		Std	Std
Construction:			
Mild steel construction with sanitary stainless steel top cover	N/A	N/A	Std
304 stainless steel construction	Std	Std	Opt
4 stainless steel leveling feet	N/A	N/A	Std
Specially-designed support feet with stainless steel stem and rubber bottom for exceptional traction	Std	Std	N/A
Overload Protection:			
LifeGuard™ base design isolates load cell from overloads and shock loads	Std	Std	N/A
5-point overload protection	N/A	N/A	Std
Load Cells:			
Environmentally-protected single-point NTEP certified aluminum load cell	Std	N/A	Std
Environmentally-protected single point, non-NTEP stainless steel load cell	N/A	N/A	Opt
Environmentally-protected single-point NTEP certified stainless steel load cell	N/A	Std	N/A
Miscellaneous:			
304 stainless steel clamshell for added load cell protection	Opt	Opt	Opt
10" x 10" cutting board, white food-grade plastic	Opt	Opt	N/A
12" x 12" cutting board, white food-grade plastic	Opt	Opt	N/A

All BenchMarks feature a sanitary surface and rigid construction to deliver high accuracy and an extremely low cost of ownership.

Specifications:

Load Cell:	BenchMark SL: RL1042 single-point BenchMark CW-80B: RL1380 stainless steel single-point BenchMark: RL1042 single-point, 12" x 12" and 12" x 18"; RL1260 single-point: 18" x 18", 18" x 24" and 24" x 24" on all capacities except 1000 lb (1000 lb scales use RL1250 single-point load cells); Optional non-NTEP RL1140 single-point, stainless steel on 50lb and 100 lb capacities 12" x 18" only
Rated Output:	BenchMark SL: 0.91 mV/V (0.6mV/V on 2 lb capacity) BenchMark CW-80B: 2.0 mV/V BenchMark: 0.91 mV/V
Output Impedance:	350 ohms
Maximum Overload:	200%
Overload Protection:	BenchMark SL and CW-80B: Shock-absorbing spider BenchMark: 5-point, independently adjusted
Cable Length:	10' (3m) 6-wire shielded
Compensated Temp. Range:	14°F to 104°F (-10°C to 40°C)
Warranty:	Two-year limited warranty



Your Rice Lake Weighing Systems Distributor is:

RICE LAKE WEIGHING SYSTEMS
Industrial Solutions on a Global Scale®



230 West Coleman Street • Rice Lake, WI 54868 • USA
TEL: 715-234-9171 • FAX: 715-234-6967 • www.rlws.com

© Rice Lake Weighing Systems 2001 PN 53841
8/01 Specifications subject to change without notice